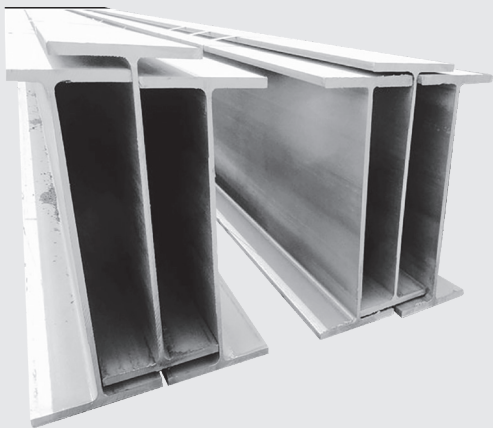
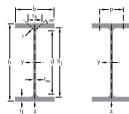
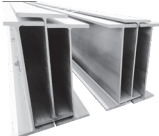


**JIS WIDE FLANGE
SHAPE**



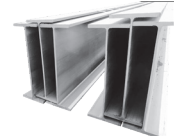
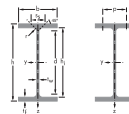
JIS WIDE FLANGE SHAPE

Size	Weight	Depth of Section (A)	Flange Width (B)	Thickness		Corner Radius (r)	Sectional Area	Moment of Inertia		Radius of Gyration		Modulus of Section	
				Web (t _w)	Flange (t _f)			J _x	J _y	ix	iy	Z _x	Z _y
mm	kg/m	mm	mm	mm	mm	mm	cm ²	cm ⁴	cm ⁴	cm	cm	cm ³	cm ³
100 x 50	9.30	100	50	5	7	8	11.85	187	14.8	3.98	1.12	37.5	5.91
100 x 100	17.2	100	100	6	8	10	21.90	383	134	4.18	2.47	76.5	26.7
125 x 60	13.2	125	60	6	8	9	16.84	413	29.2	4.95	1.32	66.1	9.73
125 x 125	23.8	125	125	6.5	9	10	30.31	847	293	5.29	3.11	136	47.0
150 x 75	14.0	150	75	5	7	8	17.85	666	49.5	6.11	1.66	88.8	13.2
150 x 100	21.1	148	100	6	9	11	26.84	1,020	151	6.17	2.37	138	30.1
150 x 150	31.5	150	150	7	10	11	40.14	1,640	563	6.39	3.75	219	75.1
175 x 90	18.1	175	90	5	8	9	23.04	1,210	97.5	7.26	2.06	139	21.7
175 x 175	40.2	175	175	7.5	11	12	51.21	2,880	984	7.50	4.38	330	112
200 x 100	18.2	198	99	4.5	7	11	23.18	1,580	114	8.26	2.21	160	23.0
	21.3	200	100	5.5	8	11	27.16	1,840	134	8.24	2.22	184	26.8
200 x 150	30.6	194	150	6	9	13	39.01	2,690	507	8.30	3.61	277	67.6
200 x 200	49.9	200	200	8	12	13	63.53	4,720	1,600	8.62	5.02	472	160
	56.2	200	204	12	12	13	71.53	4,980	1,700	8.35	4.88	498	167
	65.7	208	202	10	16	13	83.69	6,530	2,200	8.8-3	5.13	628	218
250 x 125	25.7	248	124	5	8	12	32.68	3,540	255	10.4	2.79	285	41.1
	29.6	250	125	6	9	12	37.66	4,050	294	10.4	2.79	324	47.0
250 x 175	44.1	244	175	7	11	16	56.24	6,120	984	10.4	4.18	502	113
250 x 250	64.4	244	252	11	11	16	82.06	8,790	2,940	10.3	5.98	720	233
	66.5	248	249	8	13	16	84.70	9,930	3,350	10.8	6.29	801	269
	72.4	250	250	9	14	16	92.18	10,800	3,650	10.8	6.29	867	292
	82.2	250	255	14	14	16	104.7	11,500	3,880	10.5	6.09	919	304
300 x 150	32.0	298	149	5.5	8	13	40.80	6,320	442	12.4	3.29	424	59.3
	36.7	300	150	6.5	9	13	46.38	7,210	508	12.4	3.29	481	67.7
300 x 200	56.8	294	200	8	12	18	72.38	11,300	1,600	12.5	4.71	771	160
	65.4	298	201	9	14	18	82.36	13,800	1,900	12.6	4.77	893	189



JIS WIDE FLANGE SHAPE

Size	Weight	Depth of Section (A)	Flange Width (B)	Thickness		Corner Radius (r)	Sectional Area	Moment of Inertia		Radius of Gyration		Modulus of Section	
				Web (t _w)	Flange (t _f)			J _x	J _y	ix	iy	Z _x	Z _y
mm	kg/m	mm	mm	mm	mm	mm	cm ²	cm ⁴	cm ⁴	cm	cm	cm ³	cm ³
300 x 300	84.5	294	302	12	12	18	107.7	16,900	5,520	12.5	7.16	1,150	365
	87.0	298	299	9	14	18	110.8	18,800	6,240	13.0	7.51	1,270	417
	94.0	300	300	10	15	18	119.8	20,400	6,750	13.1	7.51	1,360	450
	106	300	305	15	15	18	134.8	21,500	7,100	12.6	7.26	1,440	466
	106	304	301	11	17	18	134.8	23,400	7,730	13.2	7.57	1,540	514
350 x 175	41.4	346	174	6	9	14	52.7	11,100	792	14.5	3.88	641	91.0
	49.6	350	175	7	11	14	63.1	13,600	984	14.7	3.95	775	112
350 x 250	69.2	336	249	8	12	20	88.1	18,500	3,090	14.5	5.92	1,100	248
	79.7	340	250	9	14	20	101.5	21,700	3,650	14.6	6.00	1,280	292
350 x 350	106	338	351	13	13	20	135.3	28,200	9,380	14.4	8.33	1,670	534
	115	344	348	10	16	20	146.0	33,300	11,200	15.1	8.78	1,940	646
	131	344	354	16	16	20	166.6	35,300	11,800	14.6	8.43	2,050	669
	137	350	350	12	19	20	173.9	40,300	13,600	15.2	8.84	2,300	776
	156	350	357	19	19	20	198.4	42,800	14,400	14.7	8.53	2,450	809
	159	356	352	14	22	20	202.0	47,600	16,000	15.3	8.90	2,670	909
400 x 200	56.6	396	199	7	11	16	72.16	20,000	1,450	16.7	4.48	1,010	145
	66.0	400	200	8	13	16	84.12	23,700	1,740	16.8	4.54	1,190	174
400 x 300	94.3	386	299	9	14	22	120.1	33,700	6,240	16.7	7.81	1,780	481
	107	390	300	10	16	22	136.0	38,700	7,210	16.9	7.28	1,980	418
400 x 400	140	388	402	15	15	22	178.5	49,000	16,300	16.6	9.54	2,520	809
	147	394	398	11	18	22	186.8	56,100	18,900	17.3	10.1	2,850	951
	168	394	405	18	18	22	214.4	59,700	20,000	16.7	9.65	3,030	985
	172	400	400	13	21	22	218.7	66,600	22,400	17.5	10.1	3,330	1,120
	197	400	408	21	21	22	250.7	70,900	23,800	16.8	9.75	3,540	1,170
	200	406	403	16	24	22	254.9	78,000	26,200	17.5	10.1	3,840	1,300
	232	414	405	18	28	22	295.4	92,800	31,000	17.7	10.2	4,480	1,530
	283	428	407	20	35	22	360.7	119,000	39,400	18.2	10.4	5,570	1,930
	415	458	417	30	50	22	528.6	187,000	60,500	18.8	10.7	8,170	2,900
	605	498	432	45	70	22	770.1	298,000	94,400	19.7	11.1	12,000	4,370
450 x 200	66.2	446	199	8	12	18	84.3	28,700	1,580	18.5	4.33	1,290	159
	76.0	450	200	9	14	18	96.76	33,500	1,870	18.6	4.40	1,490	187



JIS WIDE FLANGE SHAPE

Size mm	Weight kg/m	Depth of Section (A) mm	Flange Width (B) mm	Thickness		Corner Radius (r) mm	Sectional Area cm	Moment of Inertia		Radius of Gyration		Modulus of Section	
				Web (t_1) mm	Flange (t_2) mm			cm ⁴ Jx	Jy cm ⁴	ix cm	iy cm	Zx cm ³	Zy cm ³
450X300	106	434	299	10	15	24	135.0	46,800	6,690	18.6	7.04	2,160	448
	124	440	300	11	18	24	157.4	56,100	8,110	18.9	7.18	2,550	541
500X200	79.5	496	199	9	14	20	101.3	41,900	1,840	20.3	4.27	1,690	185
	89.6	500	200	10	16	20	114.2	47,800	2,140	20.5	4.33	1,910	214
	103	506	201	11	19	20	131.3	56,500	2,580	20.7	4.43	2,230	257
500X300	114	482	300	11	15	26	145.5	60,400	6,760	20.4	6.82	2,500	451
	128	488	300	11	18	26	163.5	71,000	8,110	20.8	7.04	2,910	541
600X200	94.6	596	199	10	15	22	120.5	68,700	1,980	23.9	4.05	2,310	199
	106	600	200	11	17	22	134.4	77,600	2,280	24.0	4.12	2,590	228
	120	606	201	12	20	22	152.5	90,400	2,720	24.3	4.22	2,980	271
	134	612	202	13	23	22	107.7	103,000	3,180	24.6	4.31	3,380	314
600X300	137	582	300	12	17	28	174.5	103,000	7,670	24.3	6.63	3,530	511
	151	588	300	12	20	28	192.5	118,000	9,020	24.8	6.85	4,020	601
	175	594	302	14	23	28	222.4	137,000	10,600	24.9	6.90	4,620	701
700X300	166	692	300	13	20	28	211.5	172,000	9,020	28.6	6.53	4,980	602
	185	700	300	13	24	28	235.5	201,000	10,800	29.3	6.78	5,760	722
	215	708	302	15	28	28	273.6	237,000	12,900	29.4	6.86	6,700	853
800X300	191	792	300	14	22	28	243.4	254,000	9,930	32.3	6.39	6,410	662
	210	800	300	14	26	28	267.4	292,000	11,700	33.0	6.62	7,290	782
	241	808	302	16	30	28	307.6	339,000	13,800	33.2	6.70	8,400	915
900X300	213	890	299	15	23	28	270.9	345,000	10,300	35.7	6.16	7,760	688
	243	900	300	16	28	28	309.8	411,000	12,600	36.4	6.39	9,140	843
	286	912	302	18	34	28	364.0	498,000	15,700	37.0	6.56	10,900	1,040

